

“WE ALL DIE SOMETIME”

The Lost Cemeteries of Kingston: An Archaeological Perspective

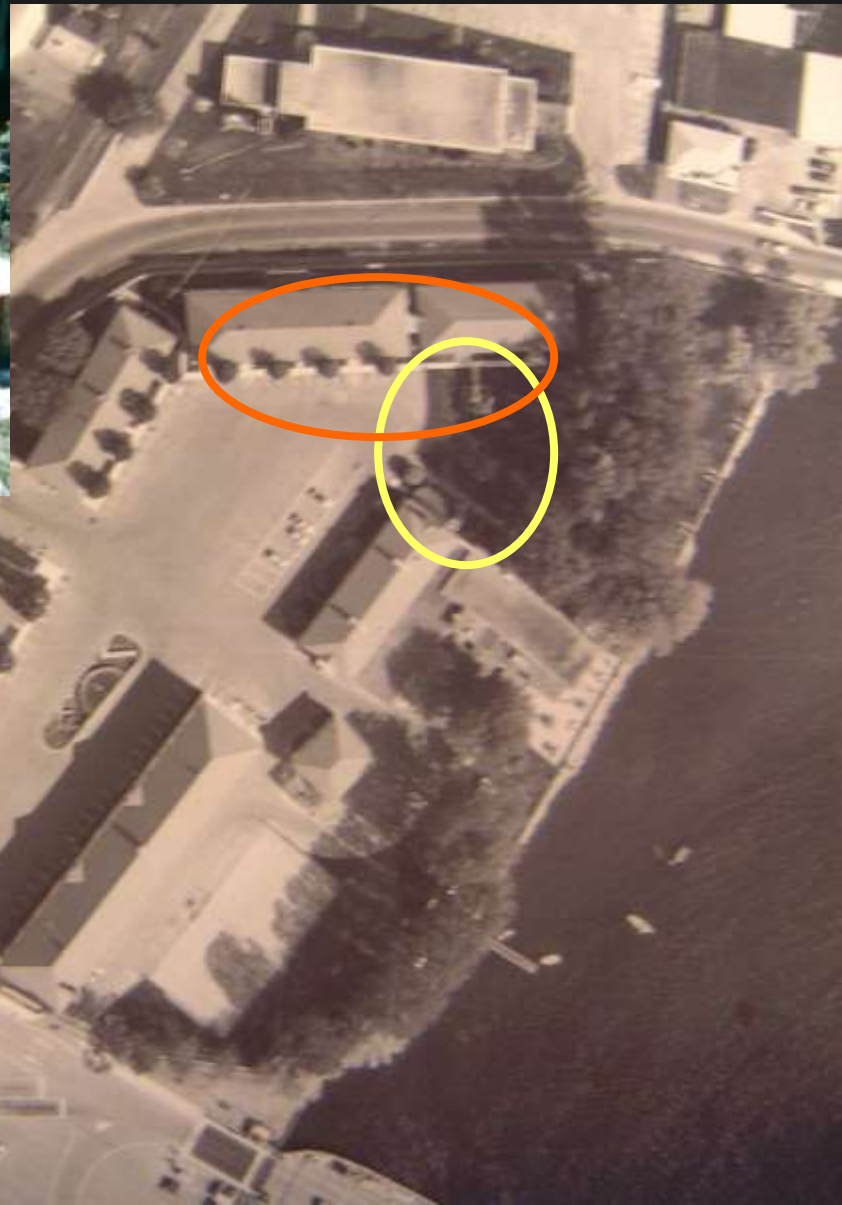
Susan M. Bazely – Archaeologist

With Historical Research by Earl J. Moorhead

BELLE ISLAND



PORT FRONTENAC



MISSISSAUGA POINT

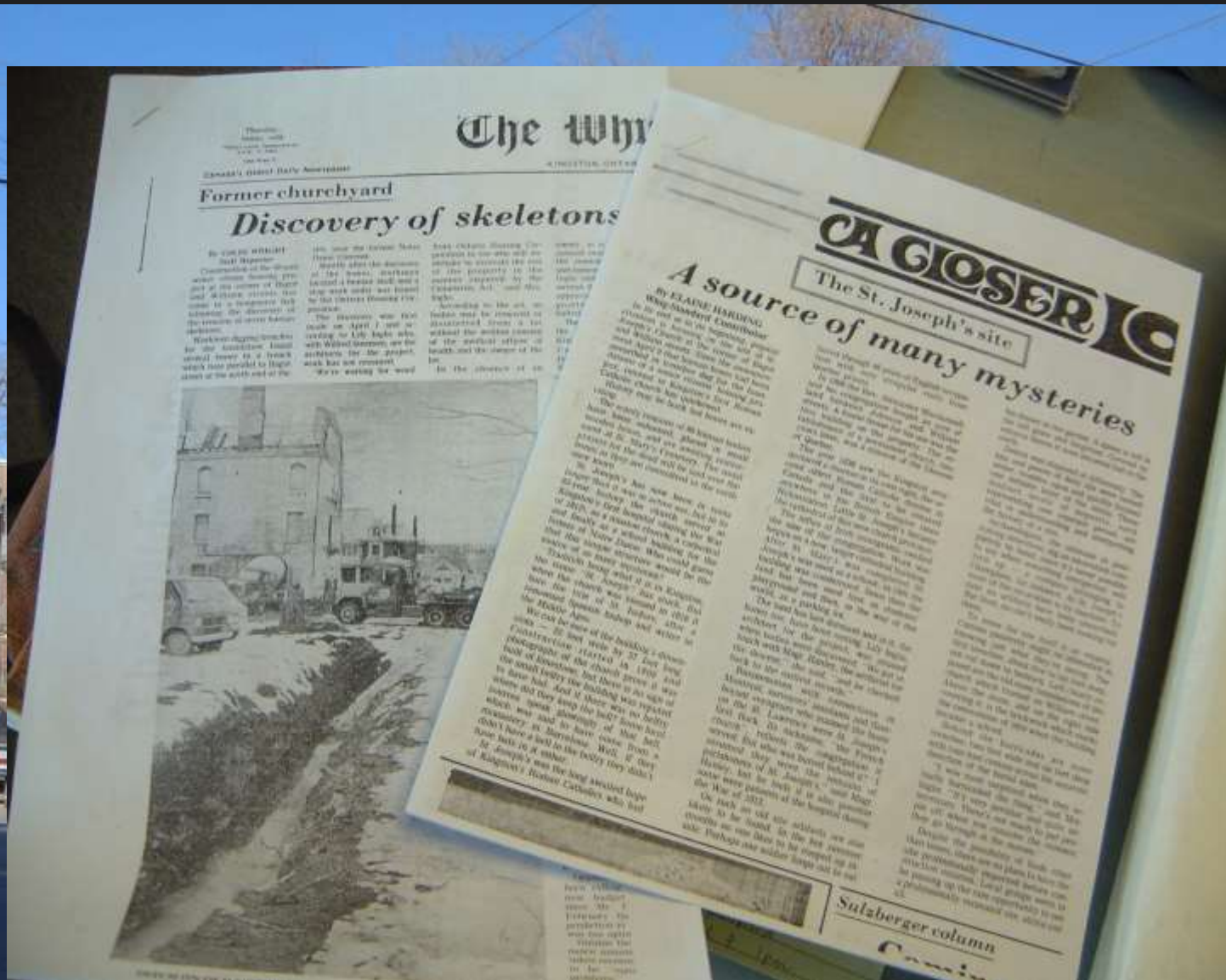


Indian Remains.—During the progress on some excavations making by the Marine Railway Company, on Mississagua Point, the remains of from 15 to 20 Indians, with beads, knives, &c., have been found, imbedded about 10 inches below the original surface of the site of the battery. The bodies appear to have been severally wrapt in bark, the remains of which were found in close proximity to the undecayed portions of each skeleton.



LOWER BURIAL GROUND

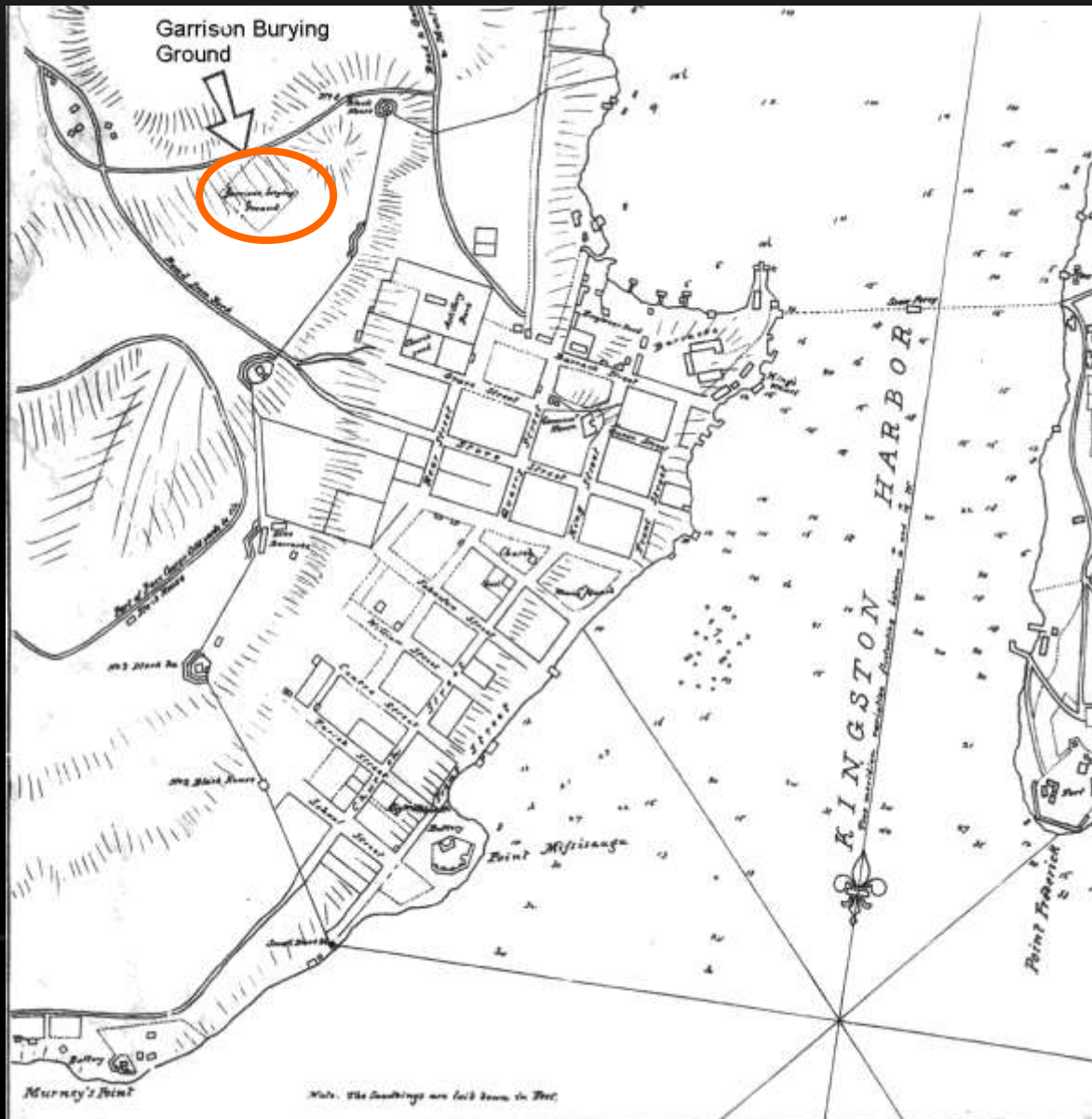




TYPHUS EPIDEMIC

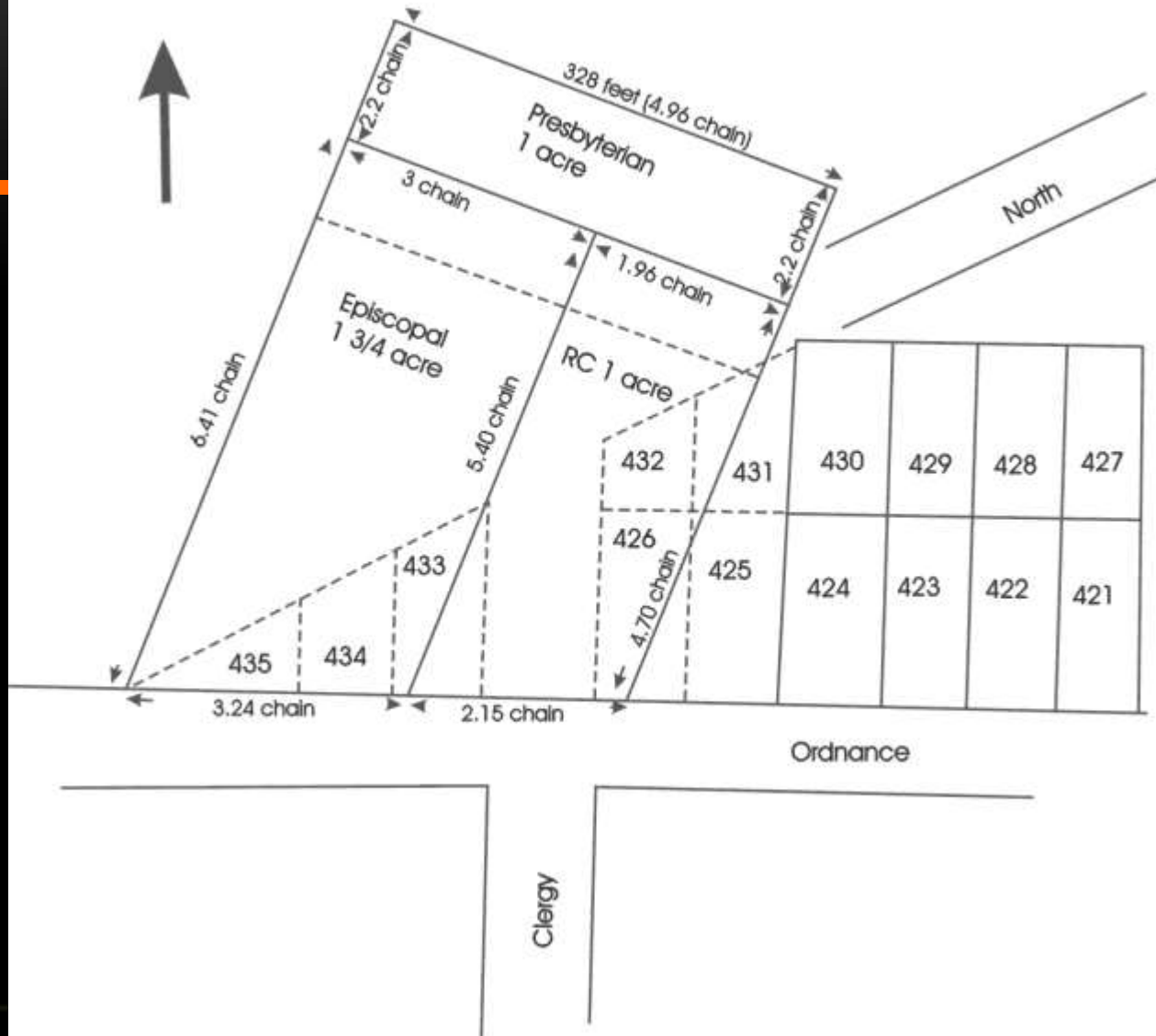


UPPER BURIAL GROUND

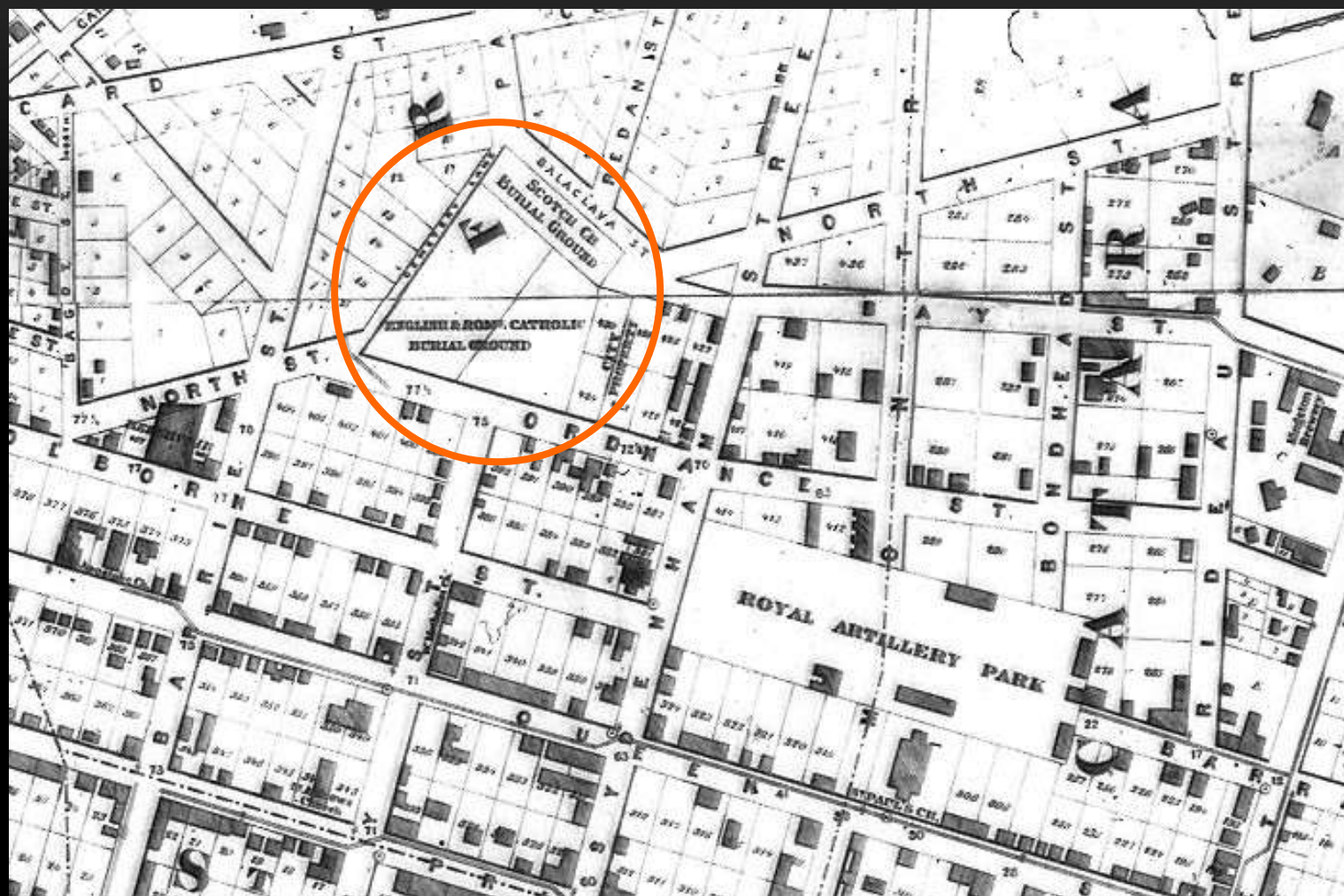


1816 Plan
NMC 11378

Burial Grounds 1825 Plan 2



Cataraqui Archaeological Research Foundation



1865 Plan NMC 17877



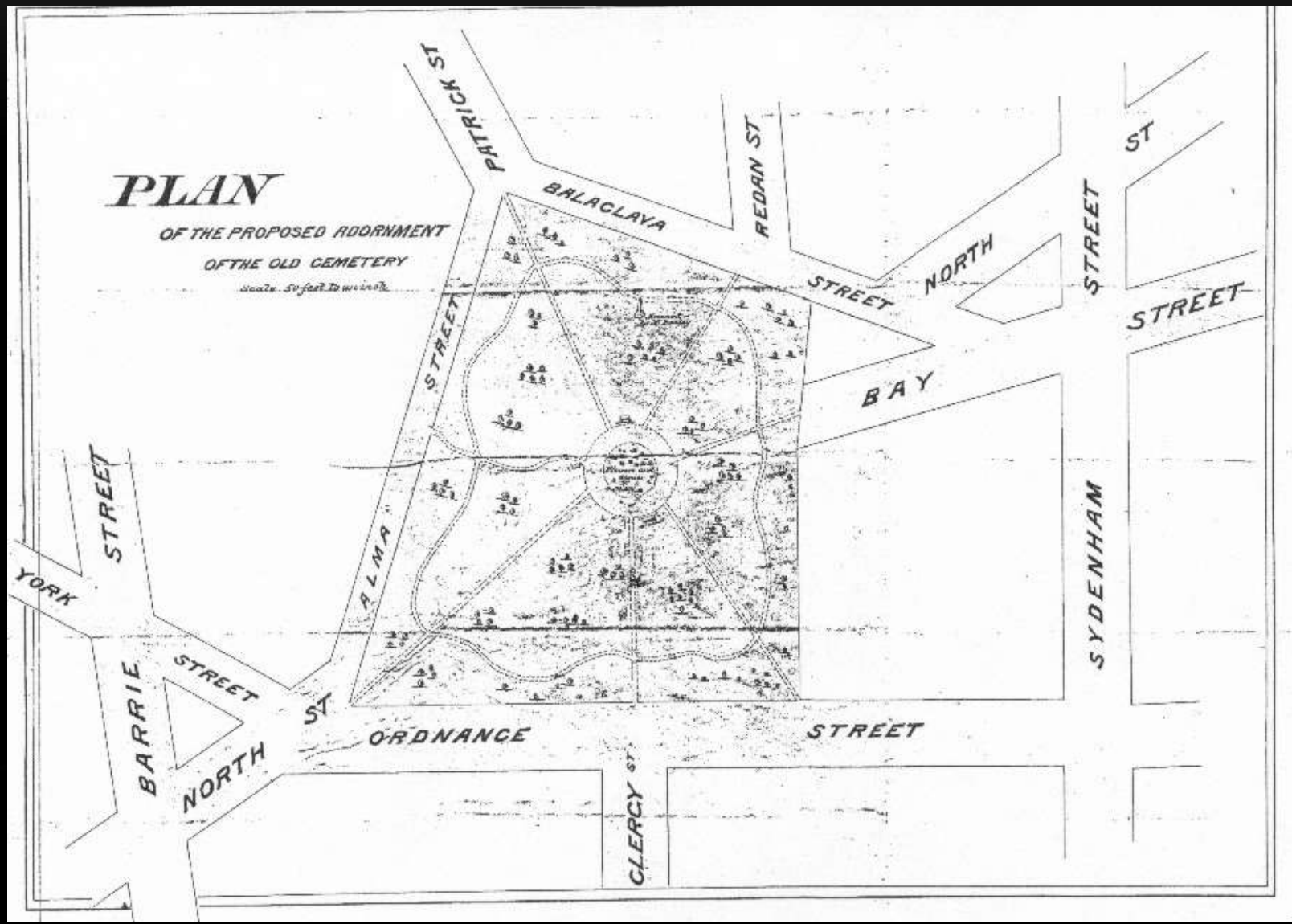
1893 Queen's University Archives



PROPOSED ADORNMENT OF THE OLD CEMETERY

C.1893

QUEEN'S UNIVERSITY ARCHIVES

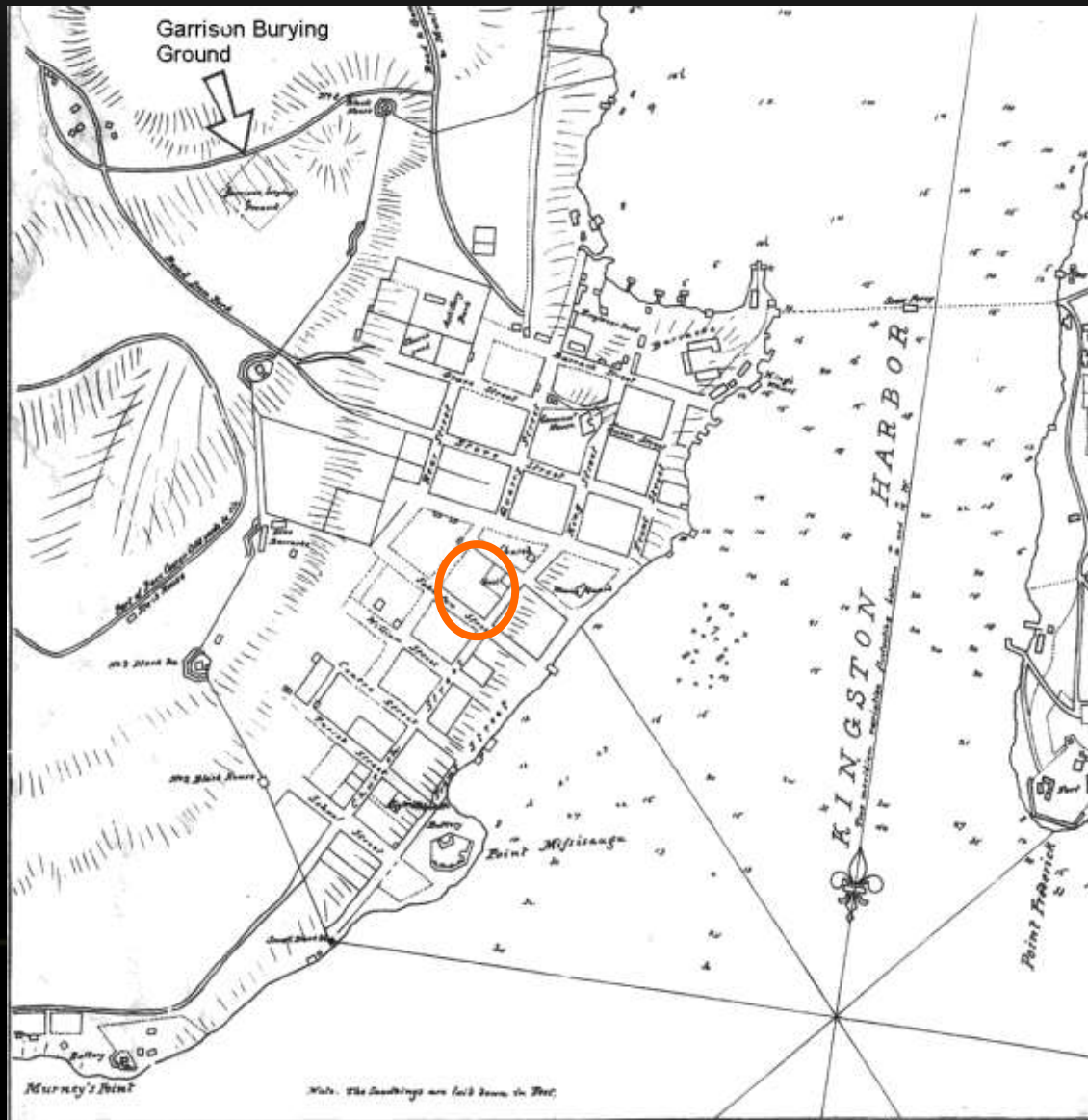




1893 exhumations, Queen's University Archives



UNION CEMETERY



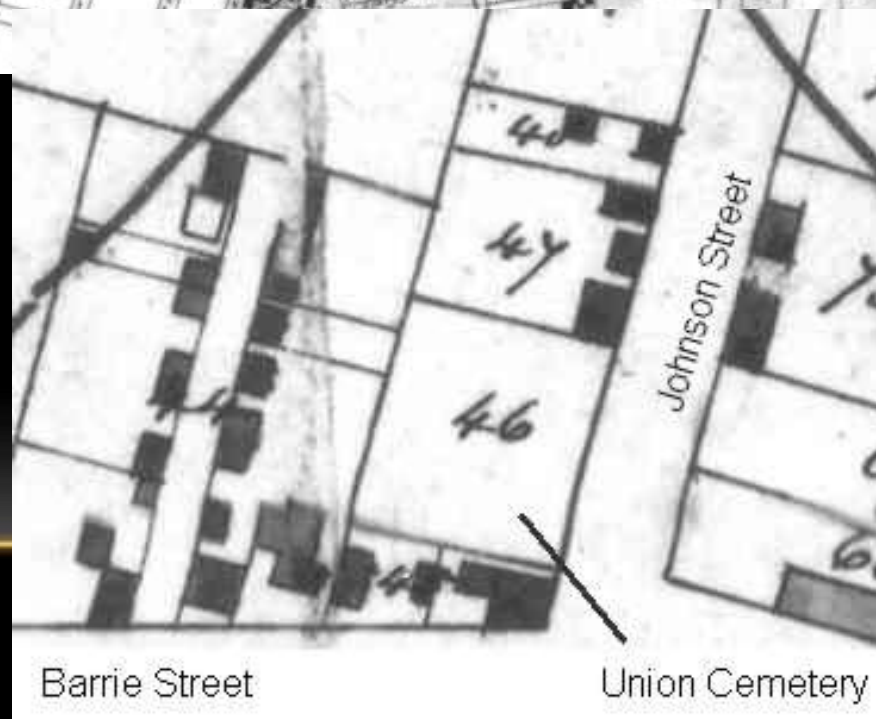
1816 plan
NMC 11378



1824 plan
NMC 16105



1842 plan NMC 17437





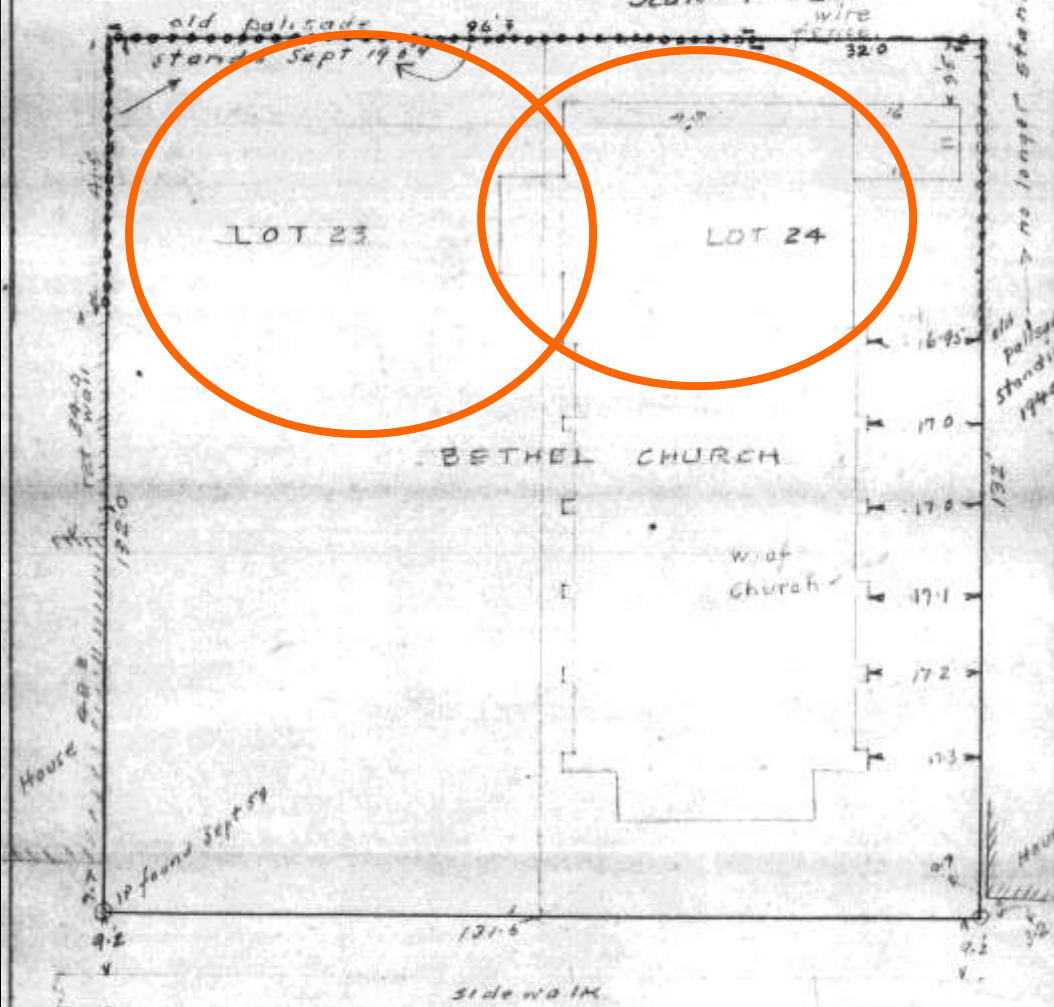
1878 Historical Atlas



c. 1880 Queen's University Archives

PLAN OF LOTS 23 AND 24 IN THE ABSTRACT
BLOCK SUBDIVISION OF FARM LOT 24 IN THE
FIRST CONCESSION OF THE TWP. OF KINGSTON
FORMERLY AND NOW IN CITY OF KINGSTON.

Scale - 1" = 20'



1959 plan

THE ABOVE IS MADE
FROM NOTES MAY 1940
AND 1959

Abstracted by *Ransom*
045
22 SEPT 59

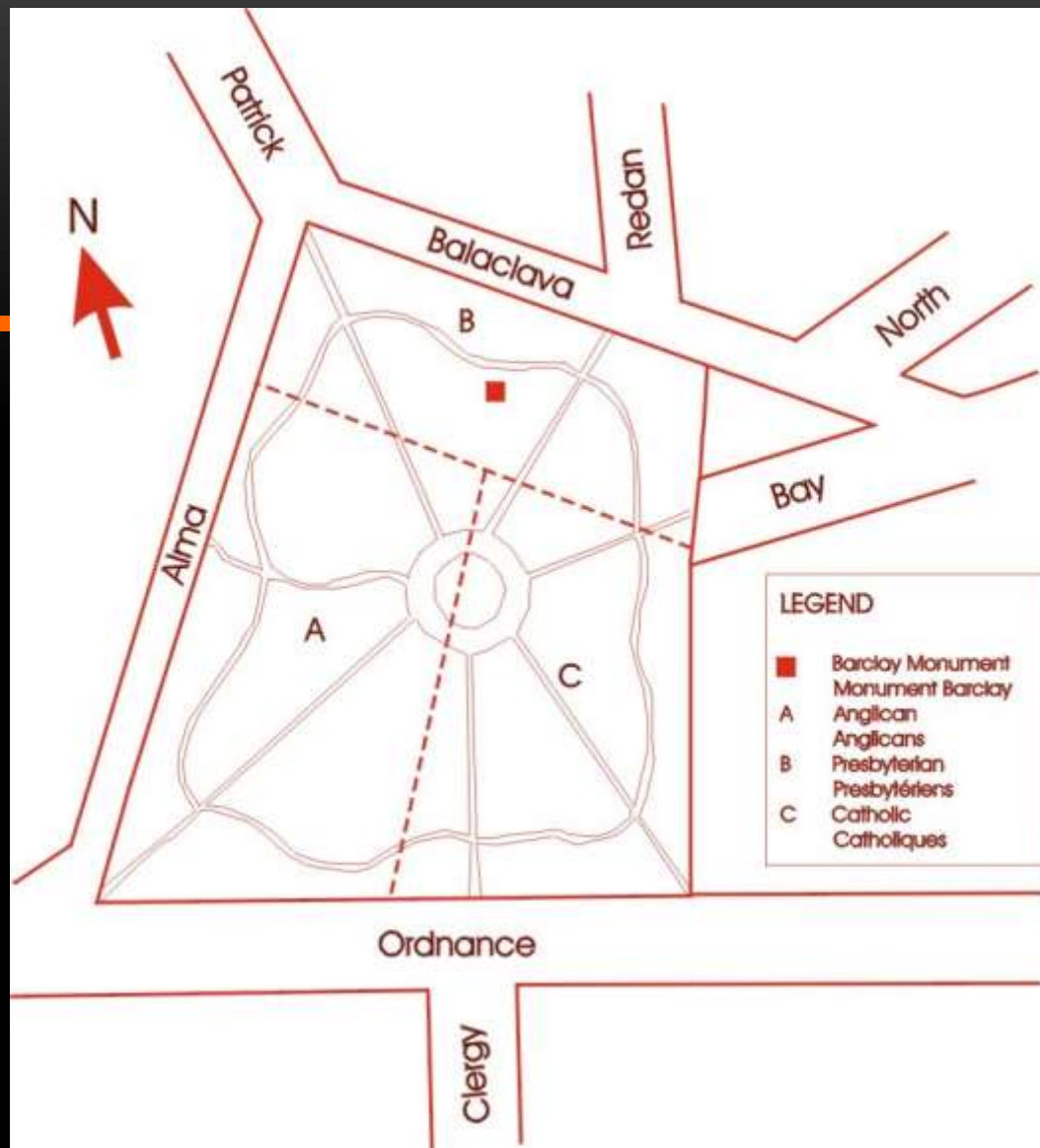
LEGISLATION

- Jurisdiction is through the Ontario Cemeteries Act
- Most powerful form of legislation
- No one can disturb a burial without authorization from the Cemeteries Registrar
- Archaeologists have a strict protocol to follow
- Archaeologists may be directed by the Registrar to investigate, and disinter a burial

THE UPPER BURIAL GROUND

- Archaeological finds





Anglican, Roman Catholic and Presbyterian Cemeteries overlaying park plan (Cataraqui Archaeological Research Foundation, for Kingston Historical Society)



BALACLAVA STREET



ALMA STREET



EXCAVATIONS IN PROGRESS

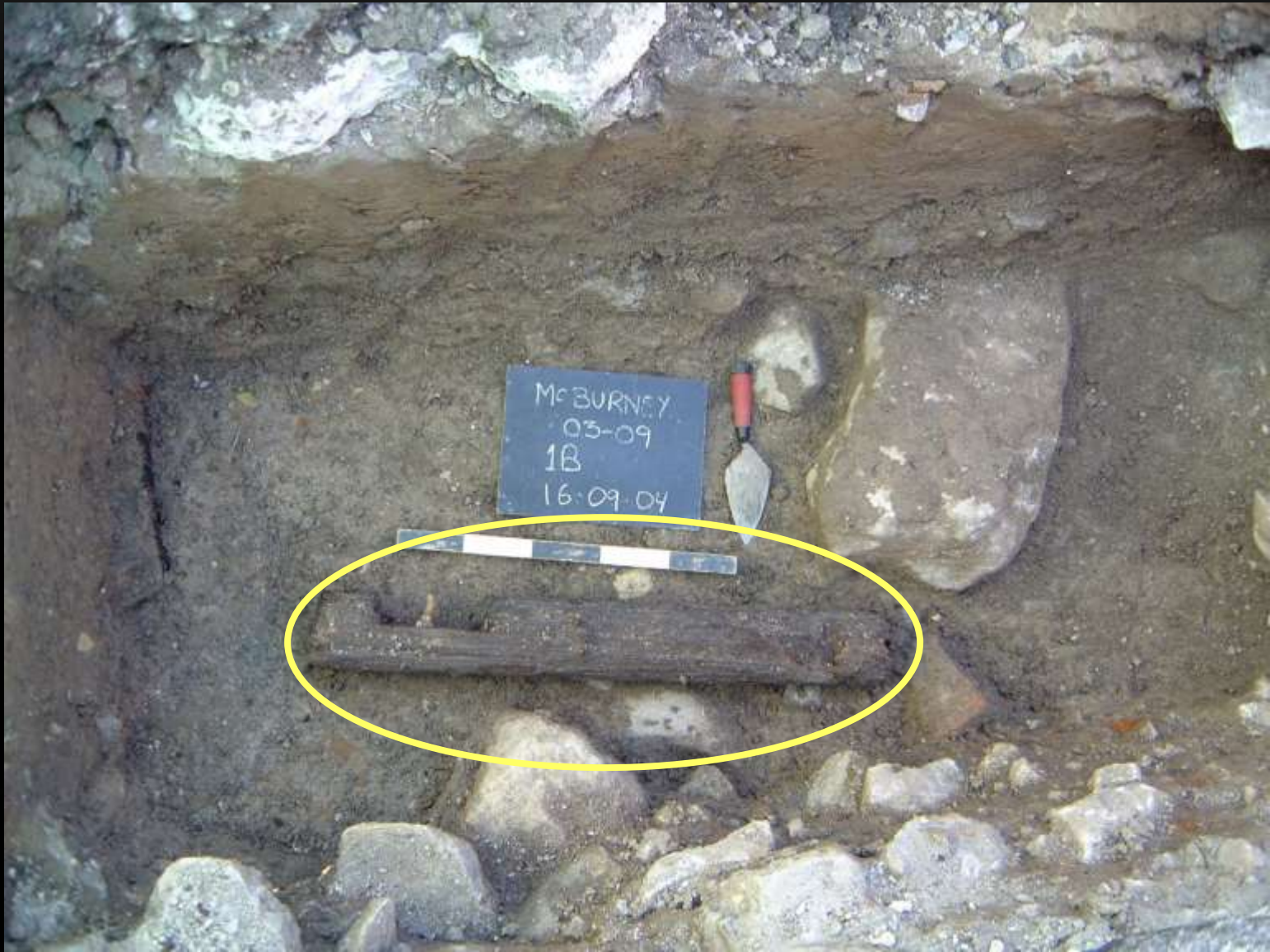


EVIDENCE





WESTERN LIMIT



03-09
McBURNIEY
BDGC-89
IM/IP
01-10-04



03-09
M^c Burney
BbGc-89
IM Planview
31/09/04

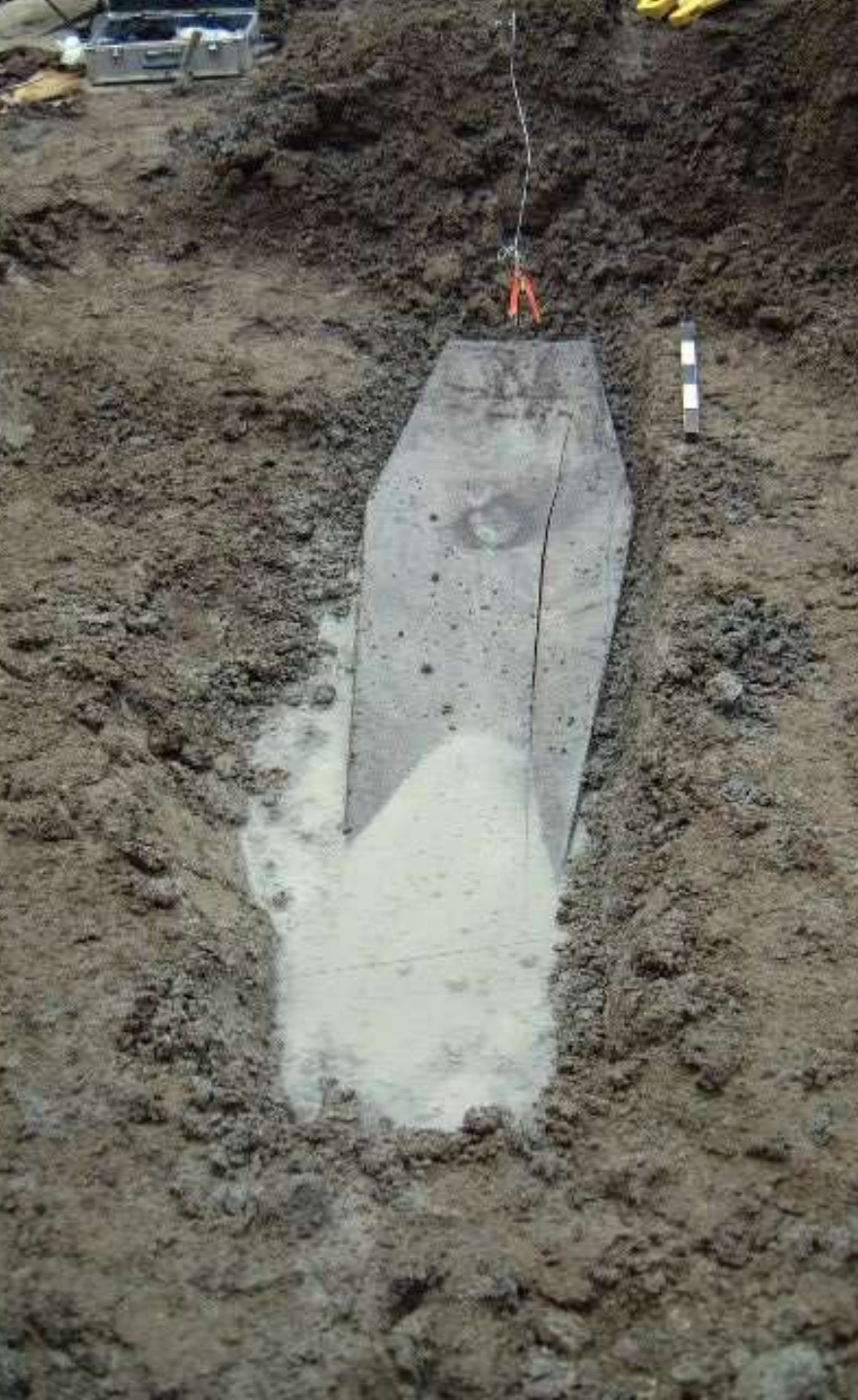


THE UNION CEMETERY

- Archaeology of a cemetery











North
Section

Unused
Area

South
Section

Backhoe
disturbed
area

Disturbed Area
Modern Utility Trenches

Grave 1J
Grave 1M
Grave 1L

Grave 1K
Grave 1P
Grave 1H

Grave 1G
Modern Disturbance
Unexcavated

Modern Disturbance
Possible Wall

Fence Base Line (Pickets)

Grave 1F

Grave 1E

Bumped
Grave #11

Grave 1B
Grave 1A

trench

Grave
1D
Top of
Excavation

1878
Church

1864 Church
Addition

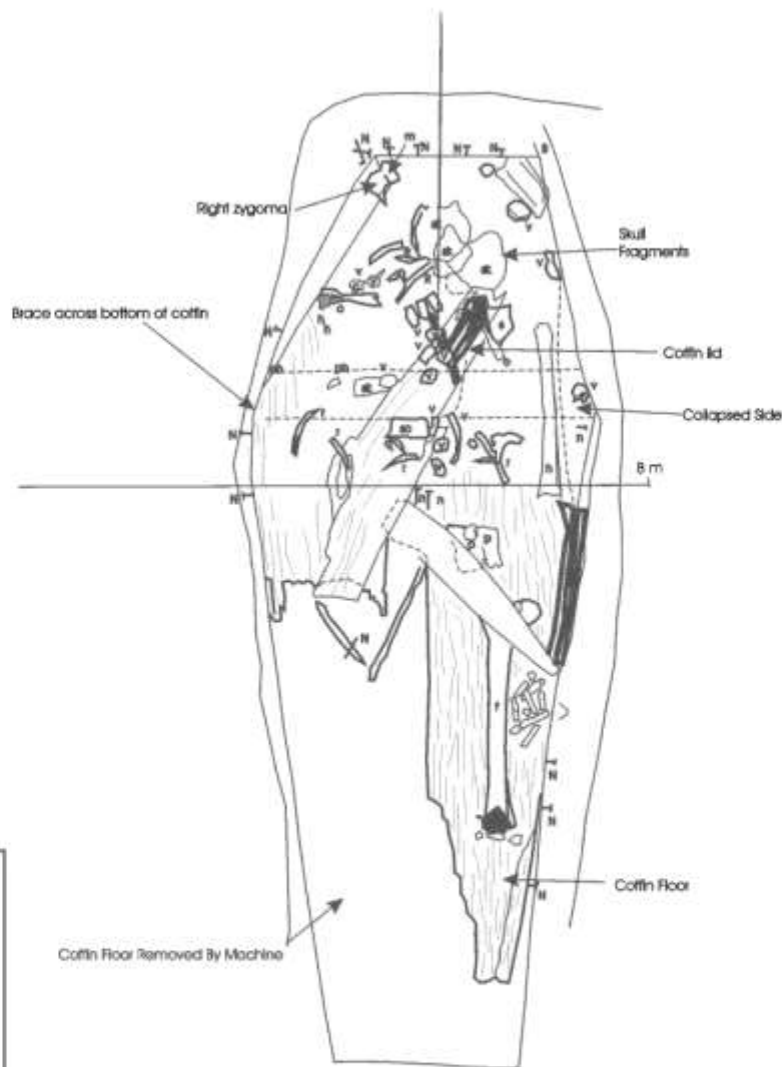
Unexcavated Bank
Excavated October 2002 by Machine

Union Cemetery (1827-1875)
02-27 Planview



CASARASQUI
ARCHAEOLOGICAL
RESEARCH
FOUNDATION





LEGEND

v = vertebra
r = rib
f = femur
h = humerus
s = scapula
c = clavicle
d = digits/hand

N →

m = maxilla
p = pelvic fragments
N = nail
s = sacrum
sk = skull
ph = phalanx

2003-04-15



02-27 BETHEL CHURCH 1G

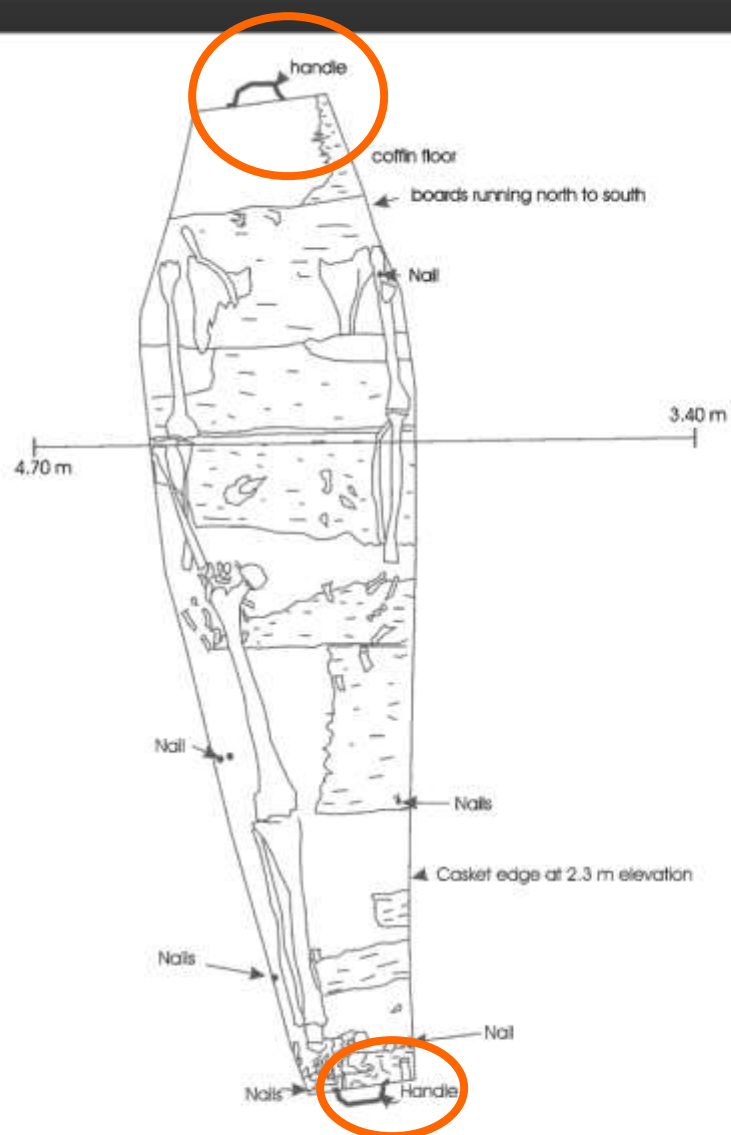


CATARAQUI ARCHAEOLOGICAL
RESEARCH FOUNDATION

370 KING STREET WEST KINGSTON, ONTARIO
K7L 2X4 (613)542-3483

DRAFTED BY S. BAZELY,
N. ADAMS, D. SU

N →



2003-04-24

10 cm

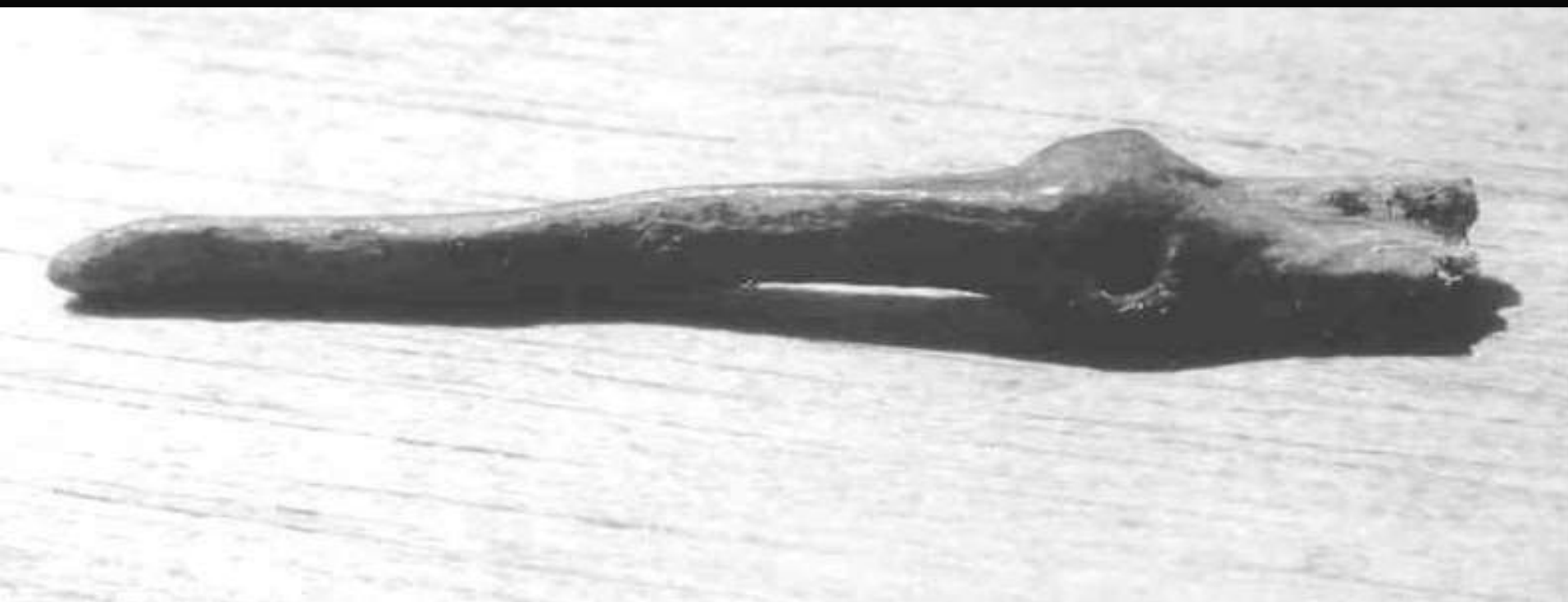
02-27 BETHEL CHURCH 1K



CATARAQUI ARCHAEOLOGICAL
RESEARCH FOUNDATION

370 KING STREET WEST KINGSTON, ONTARIO
K7L 2X4 (613)542-3483

DRAFTED BY D. KIRK,
A. FEAST, D.SU





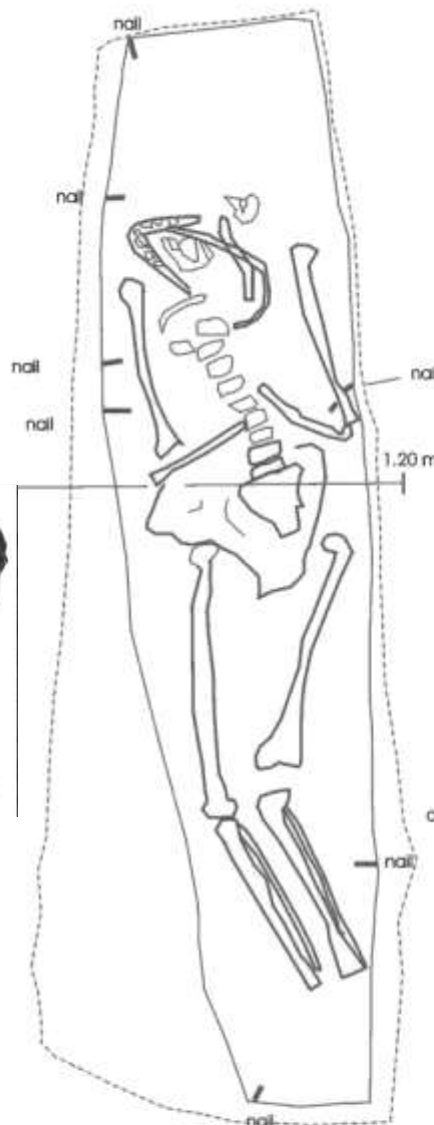
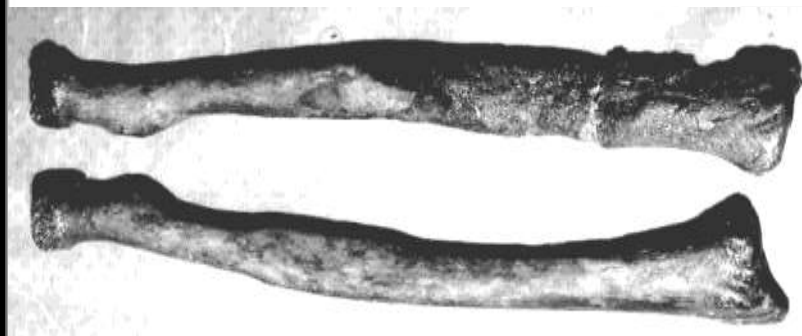








N →



2003-04-25



02-27 BETHEL CHURCH 1M
FINAL TOP PLAN OF EXCAVATION

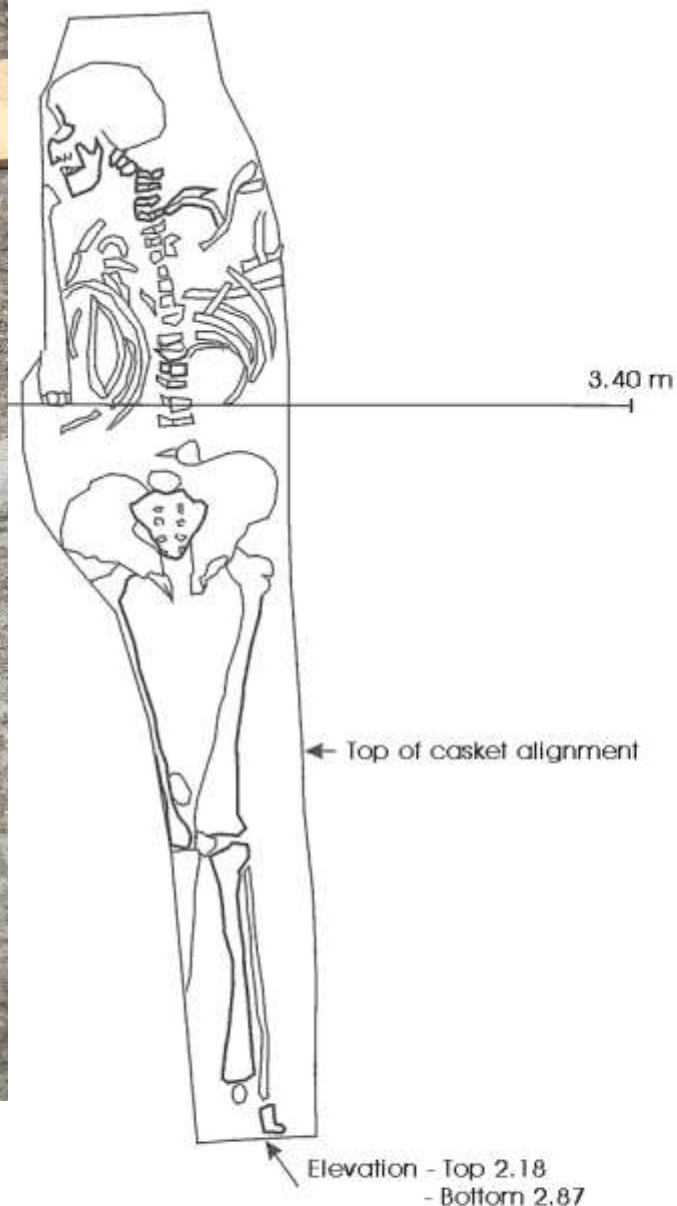


CATARAQUI ARCHAEOLOGICAL
RESEARCH FOUNDATION

370 KING STREET WEST KINGSTON, ONTARIO
K7L 2X4 (613)542-3483

DRAFTED BY M. BERRY,
D. SU





N →

2003-04-24

10 cm

02-27 BETHEL CHURCH 1K



CATARAQUI ARCHAEOLOGICAL
RESEARCH FOUNDATION

370 KING STREET WEST KINGSTON, ONTARIO
K7L 2X4 (613)542-3483

DRAFTED BY D. KIRK,
A. SEASTEDT

“WE ALL DIE SOMETIME”

The Lost Cemeteries of Kingston: An Archaeological Perspective

Susan M. Bazely – Archaeologist

With Historical Research by Earl J. Moorhead

“WE ALL DIE SOMETIME”

The Lost Cemeteries of Kingston: An Archaeological Perspective

Susan M. Bazely – Senior Archaeologist

With Historical Research by Earl J. Moorhead

Cataraqui Archaeological Research Foundation

Funding assistance for digitisation provided by Community Foundation of Greater Kingston